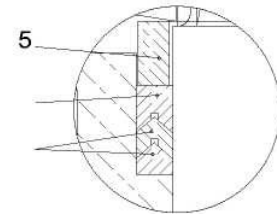
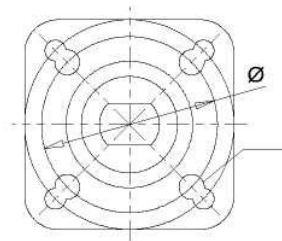
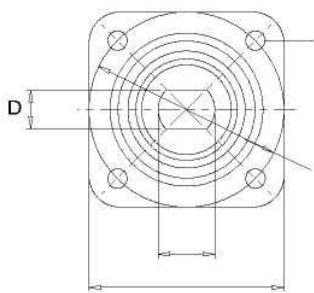


- |    |                    |            |
|----|--------------------|------------|
| 1  | Body               | A 351 CF8M |
| 2  | Stem nut           | 304        |
| 3  | Saddle lock        | 304        |
| 4  | Belleville washer  | 301        |
| 5  | Stem seal follower | 304        |
| 6  | V - packing        | RPTFE      |
| 7  | V - packing        | PTFE       |
| 8  | Stem seal          | PTFE       |
| 9  | Stem               | 316        |
| 10 | Joint gasket       | PTFE       |
| 11 | Stem washer        | 304        |
| 12 | Locking device     | 304        |
| 13 | Handle             | 304        |
| 14 | Handle sleeve      | Vinyl      |
| 15 | Stop nut           | 304        |
| 16 | Stop device        | 304        |
| 17 | O-Ring             | Viton      |

View A

View B



DN	B	C	D	ØD1	ØD2	ØE	F	G	H	H1	H2	K	L	ØM	ØN	P	ØQ	ISO top
08 - 1/4" 10 - 3/8"	9	42	6.5	36	42	36	6	9.5	62.7	6.1	34	7.4	139	6	6	42	25.2	F03/04
15 - 1/2" 20 - 3/4"	9	42	6.5	36	42	36	6	9.5	62.7	6.1	34	19.9	139	6	6	42	25.2	F03/04
25 - 1" 32 - 1 1/4"	11	50	8	40	50	42	6	11.1	67	10.9	39	25.8	165	7	6	50	30.2	F04/05
40 - 1 1/2"	14	70	9.8	50	70	50	7	14.3	86	13.9	49	32.2	215	9	7	70	39.2	F05/07
50 - 2"	14	70	9.8	50	70	50	7	14.3	86	13.9	46	27.5	215	9	7	70	39.2	F05/07